



Jordan fishwick

120 Great Stone Road, Firwood, M16 0HD

Guide Price £375,000



**120 Great Stone Road, Firwood,
Manchester, M16 0HD**

Guide Price £375,000




The Property

*****NO CHAIN - REQUIRES MODERNISATION***** Located only a short stroll from Chorlton Village is this delightful **THREE DOUBLE BEDROOM SEMI DETACHED 1930S PROPERTY** which boasts an approximately 100ft **SOUTH WESTERLY FACING GARDEN** as well as views over and **DIRECT ACCESS TO LONGFORD PARK**. This superb property will prove an ideal family home and benefits from a **DRIVEWAY** providing ample off road parking and there is significant **SCOPE TO EXTEND** (subject to all relevant planning permissions and consents). The accommodation briefly comprises: covered porch, entrance hallway, lounge with large bay window, sitting/dining room, kitchen, external store room. To the first floor there are three good sized bedrooms, the main and second both featuring original fireplaces and bathroom. Double glazing and gas central heating have been installed. Externally, to the front of the property is a walled garden with mature plants and shrubs along with a driveway. To the rear, a delightful fenced and enclosed garden extends to approximately 100 ft in length and enjoys a sunny South Westerly aspect, has been mainly laid and features large well stocked beds. An internal viewing is most highly recommended. Sold with no onward chain.



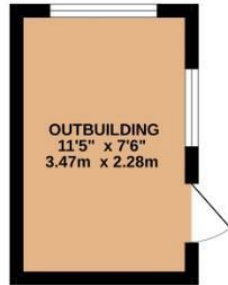
- NO CHAIN
- Requires modernisation
- Three double bedrooms + two reception rooms
- 100ft South-westerly facing garden
- Views over and direct access to Longford Park
- Driveway providing off road parking
- Significant scope to extend (STPP and consents)
- Walking distance from Chorlton Village, the Metro + multiple local schools
- Council Tax: C



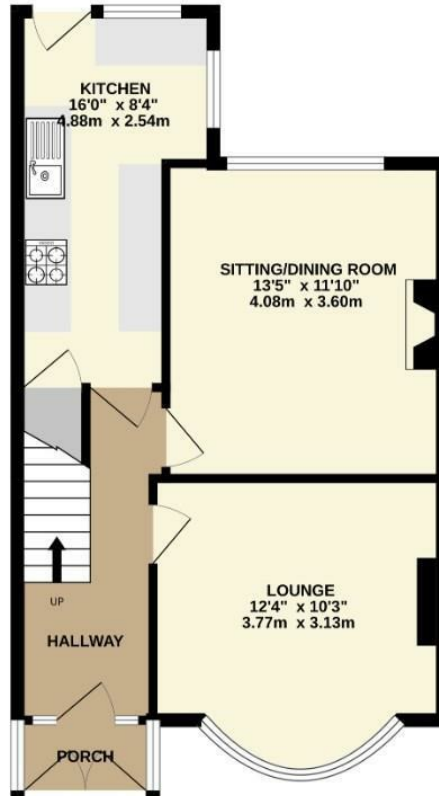
Energy Efficiency Rating		
	Current	Potential
Very energy efficient - lower running costs		
(92 plus) A		
(81-91) B		
(69-80) C		
(55-68) D		
(39-54) E		
(21-38) F		
(1-20) G		
Not energy efficient - higher running costs		
England & Wales	EU Directive 2002/91/EC 	



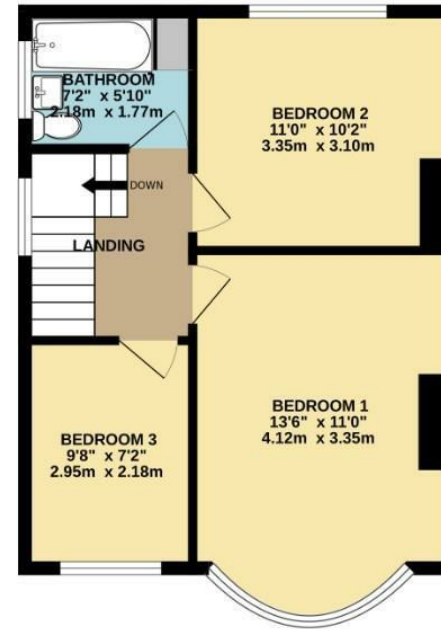
OUTBUILDING
85 sq.ft. (7.9 sq.m.) approx.



GROUND FLOOR
506 sq.ft. (47.0 sq.m.) approx.



1ST FLOOR
434 sq.ft. (40.3 sq.m.) approx.



TOTAL FLOOR AREA : 1025 sq.ft. (95.2 sq.m.) approx.

Whilst every attempt has been made to ensure the accuracy of the floorplan contained here, measurements of doors, windows, rooms and any other items are approximate and no responsibility is taken for any error, omission or mis-statement. This plan is for illustrative purposes only and should be used as such by any prospective purchaser. The services, systems and appliances shown have not been tested and no guarantee as to their operability or efficiency can be given.
Made with Metropix ©2026



These particulars are believed to be accurate but they are not guaranteed and do not form a contract. Neither Jordan Fishwick nor the vendor or lessor accept any responsibility in respect of these particulars, which are not intended to be statements or representations of fact and any intending purchaser or lessee must satisfy himself by inspection or otherwise as to the correctness of each of the statements contained in these particulars. Any floorplans on this brochure are for illustrative purposes only and are not necessarily to scale.

Offices at: Chorlton, Didsbury, Disley, Hale, Glossop, Macclesfield, Manchester Deansgate, Manchester Whitworth Street, New Mills, Sale, Wilmslow and Withington